

The
Vividz
@ Bukit Jalil

FEARLESSNESS FOR THE FUTURE:

The boldness implied by "Vivid" reflects a fearless and forward-thinking attitude. It speaks to a willingness to embrace creativity, which is integral to the vision of translating natural elements and bright colors into the spaces. The name reinforces the idea that the building's design is inspired by the untamed beauty of nature, which is reflected in the EXSIM's palette of life.

LIVE IN FULL COLOUR



ECO-RESPONSIBLE DEVELOPER

The GreenRE logo has been the hallmark symbol for buildings and townships nationwide that encourages sustainable living for residents and developer.

At EXSIM, every venture we take utilised technology in an intelligent and organic manner for the advancement of mankind.

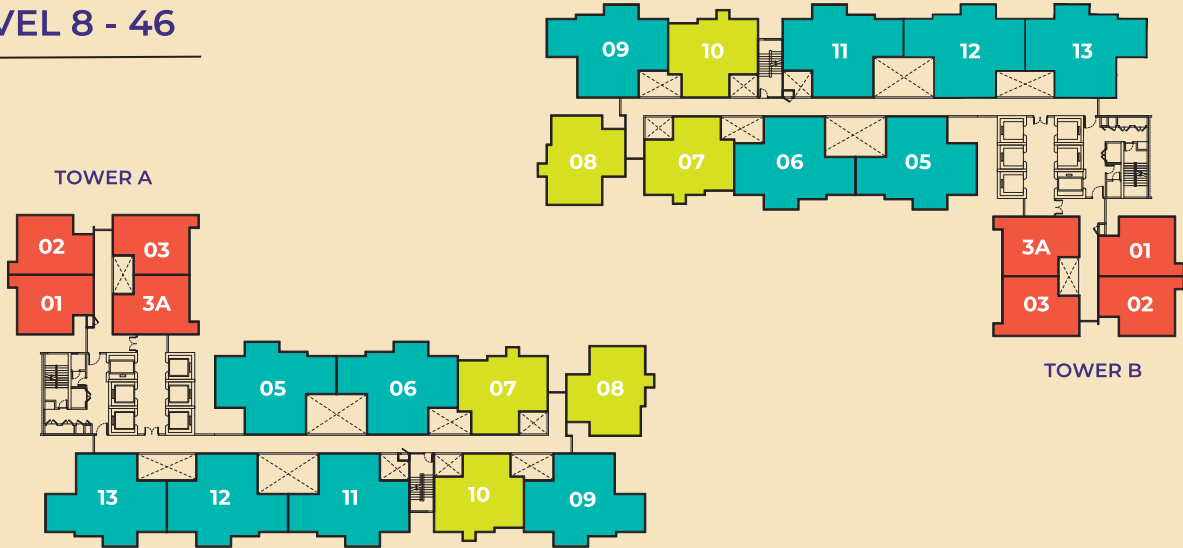
We are also equally intensifying our efforts to create buildings with a specific character which exemplify innovative green features.

Discover a place to seek the colour in every moment. In these modern one-, two-, and three-bedroom homes at the centre of Bukit Jalil's active neighbourhood, inspiration is right outside your door. Here, curated living meets the vibrancy of a wellness-led community.

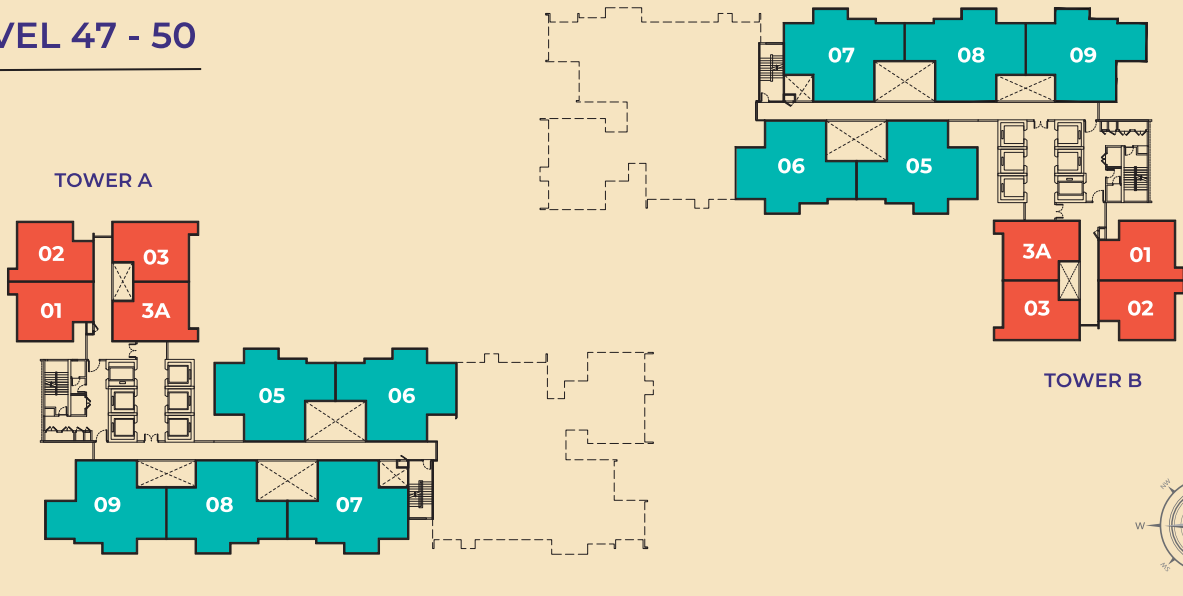
FLOOR PLANS

■ Type A
 ■ Type B
 ■ Type C

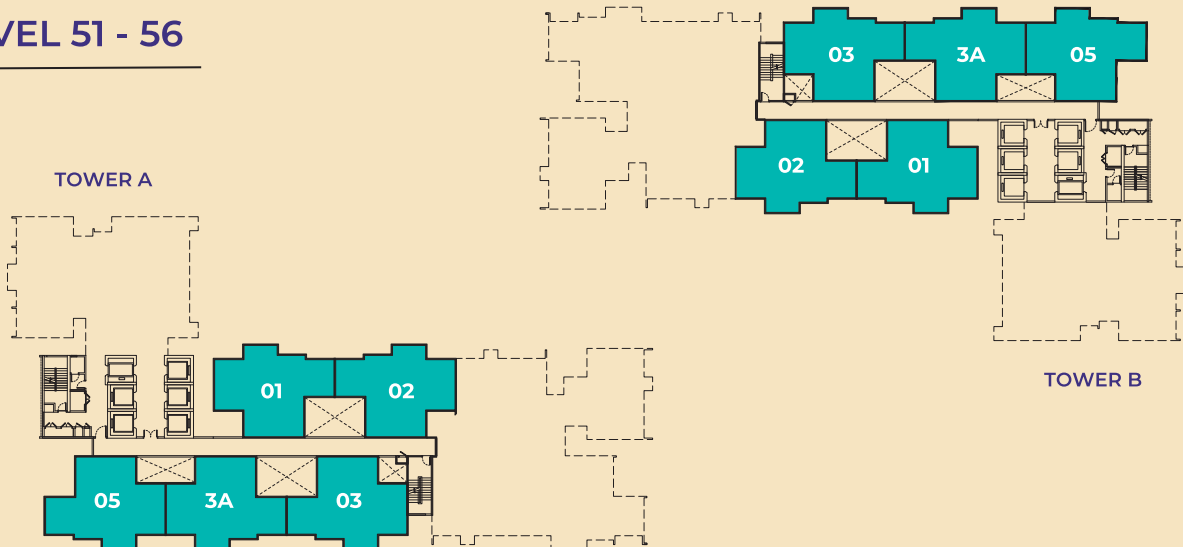
LEVEL 8 - 46



LEVEL 47 - 50

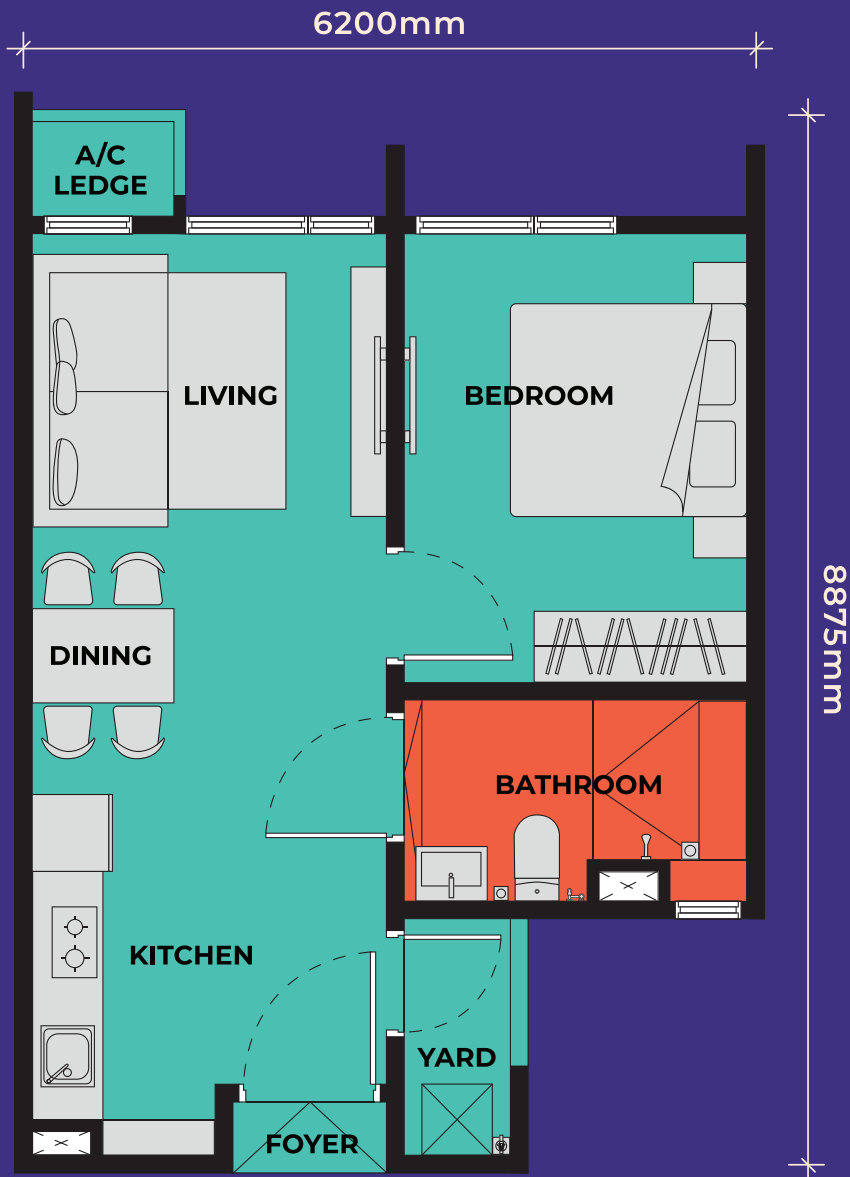


LEVEL 51 - 56



TYPE A1

(1R + 1B) | 484 sq.ft. | 45sm



TYPE B1

(2R + 2B) | 689 sq.ft. | 64sm



TYPE C1

(3R + 2B) | 915 sq.ft. | 85sm | (Balcony)



TYPE C2

(3R + 2B) | 915 sq.ft. | 85sm | (Without Balcony)



LIFE IN BUKIT JALIL



Sport Facilities

Bukit Jalil National Stadium, Axiata Arena, Bukit Jalil Golf & Country Club and more.



Education Institutions

Tzu Chi International School, International Medical University, SMK Seksyen 1 Bandar Kinrara and more.



Wellness Facilities

KL Wellness City, KMI Taman Desa Medical Centre, Sunway Medical Centre and more.



Lifestyle Malls

Pavilion Bukit Jalil, Mid Valley Megamall, IOI Mall Puchong and more.

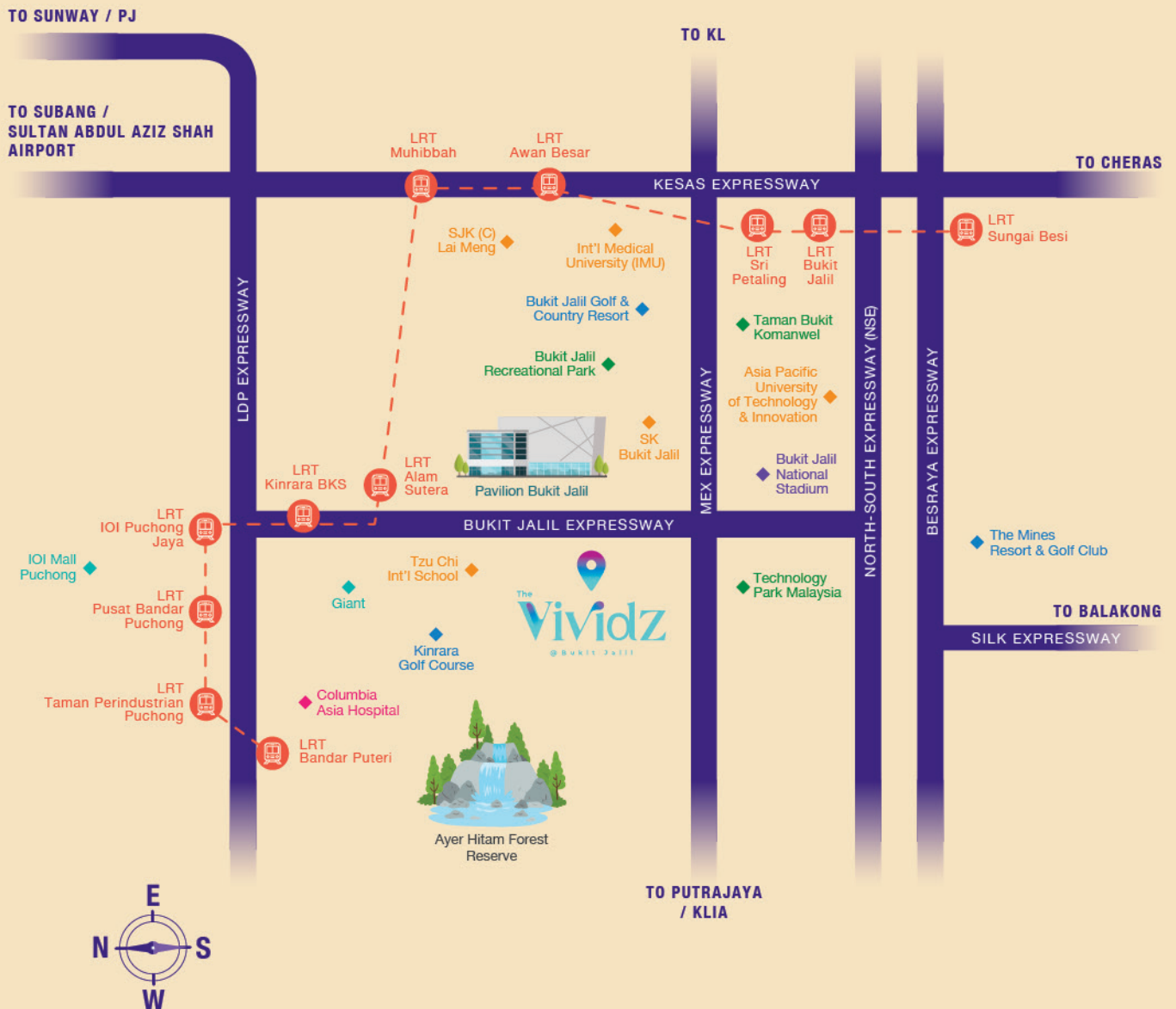


Green Parks

Bukit Jalil Recreational Park, Taman Bukit Komanwel, Novel Park and more.

Bukit Jalil is a popular choice for families due to its safe and secure environment, ample green spaces, and excellent amenities. The neighbourhood offers a high quality of life, making it an ideal place to raise a family. Experience the vibrant and dynamic lifestyle of Bukit Jalil while enjoying the tranquillity and comfort of The Vividz @ Bukit Jalil.

BE CENTRED. STAY CONNECTED.



Bukit Jalil's strategic location provides easy access to other parts of Kuala Lumpur and beyond. Major highways such as the Maju Expressway (MEX) and the Damansara-Puchong Expressway (LDP) offer convenient connections to the city centre, the Kuala Lumpur International Airport, and other key destinations.

A COLLABORATIVE EFFORT BY

EXSIM

THREE
TOWERS



  **EXSIM MILLERZ SQUARE SALES GALLERY**

G-08, Ground Floor, Megan Legasi,
No. 357, Jalan Kelang Lama,
58000 Kuala Lumpur.

T: 03-2779 2570 **W:** vividz.com.my
M: 012 - 766 0919

EXSIM BUKIT JALIL CITY SDN. BHD.

[Registration No. 201401009297 (1368455-U)]

D-35-01, Level 35, EXSIM Tower,
Millerz Square @ Old Klang Road, Megan Legasi,
No. 357, Jalan Kelang Lama, 58000 Kuala Lumpur.

T: 03 7963 1999 **E:** info@exsim.com.my
W: exsim.com.my

All information, items and/or products herein contained and/or displayed, including but not limited to measurement, features, materials, specifications, brands, colours, plans, drawings, images, pictures, visual renditions, illustrations and presentation of interiors, furniture and fittings layout, landscapes, roads, access, lifestyle, scale models, show units and/or development are artist's impressions/renderings for illustration purposes only and are subject to change as may be required and/or recommended by the relevant authorities and/or the developer's architects, engineers and/or consultants without prior notification to you. Nothing contained herein shall be taken as identical representation of the actual state thereof or constitute or be construed to constitute an offer, a contract, part of the sale and purchase agreement (SPA), a representation and/or warranty on the part of the developer, unless expressly and specifically incorporated in the SPA. Prospective purchasers are advised to read and scrutinize the SPA together with its enclosures or to engage relevant independent professionals for advice prior to signing of the SPA. The developer and/or other related companies and parties shall neither be held responsible for any claims, error or inaccuracy nor be liable for any losses, damages, costs, expenses, or liabilities that may be incurred, suffered or sustained resulting from any reliance on any information, items and/or products herein contained and/or displayed or any part thereof.